

# SURETORQ

Quality Is All That Matters



NEW

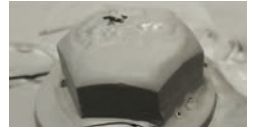
# Premium+

Our **new range** of Suretorq Premium+ performance tools

## Impact Extractors



Hex flats with square drive for use with impact wrench, ratchet wrench or spanner.



Ideal for removing rounded off, rusted and painted over bolts or nuts

### 3/8" Dr 13PCS Extractor Set

#### Contents

1/4", 5/16" (8mm), 3/8", 10mm, 7/16" (11mm), 12mm, 1/2", 13mm, 9/16" (14mm), 5/8" (16mm), 17mm, 11/16", 3/4" (19mm)



04401301

### 3/8" Dr 6PCS Extractor Set

#### Contents

5/16" (8mm), 10mm, 12mm, 13mm, 9/16" (14mm)  
Adapter 1/4" Hex to 3/8" Sq.



04400604

### 3/8" Dr 19PCS Extractor Set

#### Contents

1/4", 5/16" (8mm), 3/8", 10mm, 7/16" (11mm), 12mm, 1/2", 13mm, 9/16" (14mm), 5/8" (16mm), 17mm, 11/16", 3/4" (19mm)

#### 1/4" Hex Shank

5mm, 6mm, 5/16" (8mm), 10mm, 12mm, Adapter 1/4" Hex to 3/8" Sq.



04401902

### 3/8" Dr 5PCS Deep Extractor Set

#### Contents

10mm, 12mm, 13mm, 9/16" (14mm), 5/8" (16mm)



04400504

### 1/2" 5PCS Impact Damaged Nut Bolt Extractor Set

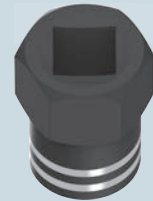
#### Contents

3/4" (19mm), 13/16" (21mm), 7/8" (22mm), 15/16" (24mm), 1" (25mm)



04400505

Left hand spiral flutes for maximum gripping power



### 3/8" Square Drive

Size	Length	Part No
1/4"	28mm	04400101
5/16" (8mm)	28mm	04400102
3/8"	28mm	04400103
10mm	28mm	04400104
7/16" (11mm)	28mm	04400105
12mm	28mm	04400106
1/2"	28mm	04400107
13mm	28mm	04400108
9/16" (14mm)	28mm	04400109
5/8" (16mm)	28mm	04400110
17mm	28mm	04400111
11/16"	28mm	04400112
3/4" (19mm)	28mm	04400113



Retail Packaging

### 1/2" Square Drive

Size	Length	Part No
3/4" (19mm)	44.6mm	04400119
13/16" (21mm)	44.6mm	04400120
7/8" (22mm)	44.6mm	04400121
15/16" (23mm)	44.6mm	04400122
1" (25mm)	44.6mm	04400123

### 1/4" Hex Drive Shank

Size	Length	Part No
5mm	65mm	04400114
6mm	65mm	04400115
5/16" (8mm)	65mm	04400116
10mm	65mm	04400117
12mm	65mm	04400118